

DATEC-TERMINAL

Modular plastic enclosures for data collection equipment

DATEC-TERMINAL is a tough and attractive housing system uniquely designed to meet the requirements of desktop and wall mounted data collection equipment as well as access control systems.

- ergonomic terminal enclosures
- operating area inclined by 20°
- for desktop or wall mounted systems
- for mounting of standard read/write devices, RFID Reader etc.
- four sizes and two types
- sizes M & L with separate terminal section which is easily accessible
- fast assembly and easy access for components
- hidden screw fixing
- wide range of accessories, functional and flexible to use
- protection class IP 54 in combination with cover and closed lid
- hidden wall mounting with removal prevention
- internal fastening pillars for PCBs 100 x 160 mm or double eurocard sizes (S, SL and L)
- plain surfaces for individual machining and interfaces
- recessed operating area for protecting a membrane keypad



DATEC-TERMINAL

Applications and Examples

Systems for data collection on the job and machines, access and security controls, measuring and controlling, heating and air-conditioning units, medical, wellness, point-of-sale devices, etc.



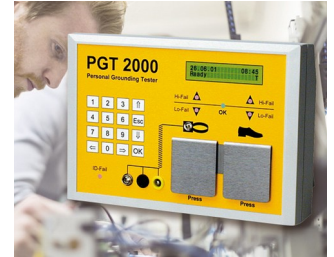
Dental Whitening and laser therapy



Device for monitoring and controlling distillation units



RFID access control readers



System for preventing electrostatic charges



Terminal for time recording, access control and order management



Versatile terminal for leisure facilities

View Customizing Options

What do you still need for your own very personal product? We can supply enclosures and tuning knobs with all necessary modifications for fitting your electronic components.

Customizing options for Datec-Terminal



Machining



Lacquering



Printing



Laser marking



Decor foils



Special material



RFI/EMI shielding



Installation / Assembly of accessories

DATEC-TERMINAL

Select Versions



B4013117
DATEC-TERMINAL S
ABS (UL 94 HB)
off-white RAL 9002
5.12"x7.09"x3.39"
IP 54 opt.



B4013637
Cover S, convex
ABS (UL 94 HB)
off-white RAL 9002
5.12"x7.09"x1.10"



B4016117
DATEC-TERMINAL M, Vers. I
ABS (UL 94 HB)
off-white RAL 9002
6.61"x10.71"x3.98"
IP 54 opt.



B4016217
DATEC-TERMINAL M, Vers. II
ABS (UL 94 HB)
off-white RAL 9002
6.61"x10.71"x3.98"
IP 54 opt.



B4016317
DATEC-TERMINAL M, Vers. III
ABS (UL 94 HB)
off-white RAL 9002
6.61"x10.71"x3.98"
IP 54 opt.



B4016631
Cover M, convex
PC (UL 94 V-0)
transparent
6.61"x8.66"x1.14"



B4016637
Cover M, convex
ABS (UL 94 HB)
off-white RAL 9002
6.61"x8.66"x1.14"



B4026117
DATEC-TERMINAL SL
ABS (UL 94 HB)
off-white RAL 9002
10.39"x7.09"x3.39"
IP 54 opt.



B4026637
Cover SL, convex
ABS (UL 94 HB)
off-white RAL 9002
10.35"x7.09"x1.10"



B4030117
DATEC-TERMINAL L, Vers. I
ABS (UL 94 HB)
off-white RAL 9002
11.89"x10.71"x3.98"
IP 54 opt.



B4030217
DATEC-TERMINAL L, Vers. II
ABS (UL 94 HB)
off-white RAL 9002
11.89"x10.71"x3.98"
IP 54 opt.



B4030317
DATEC-TERMINAL L, Vers. III
ABS (UL 94 HB)
off-white RAL 9002
11.89"x10.71"x3.98"
IP 54 opt.



B4030631
Cover L, convex
PC (UL 94 V-0)
transparent
11.89"x8.66"x1.14"



B4030637
Cover L, convex
ABS (UL 94 HB)
off-white RAL 9002
11.89"x8.66"x1.14"

DATEC-TERMINAL

Accessory to complete



B4013617
Cover S
ABS (UL 94 HB)
off-white RAL 9002
5.12"x7.09"x0.91"



B4013621
Cover S
PC (UL 94 V-0)
transparent
5.12"x7.09"x0.91"



B4013637
Cover S, convex
ABS (UL 94 HB)
off-white RAL 9002
5.12"x7.09"x1.10"



B4016417
Lid M closed, flat
ABS (UL 94 HB)
off-white RAL 9002
5.28"x2.44"x0.94"



B4016457
Lid M closed, high
ABS (UL 94 HB)
off-white RAL 9002
5.28"x2.64"x1.50"



B4016617
Cover M, flat
ABS (UL 94 HB)
off-white RAL 9002
6.61"x8.66"x1.14"



B4016621
Cover M, flat
PC (UL 94 V-0)
transparent
6.61"x8.66"x1.14"



B4016631
Cover M, convex
PC (UL 94 V-0)
transparent
6.61"x8.66"x1.14"



B4016637
Cover M, convex
ABS (UL 94 HB)
off-white RAL 9002
6.61"x8.66"x1.14"



B4016657
Cover M, high
ABS (UL 94 HB)
off-white RAL 9002
6.61"x8.66"x1.97"



B4016671
Cover strip M / L
PC (UL 94 V-0)
transparent



B4016677
Cover strip M / L
ABS (UL 94 HB)
off-white RAL 9002



B4026617
Cover SL
ABS (UL 94 HB)
off-white RAL 9002
10.39"x7.09"x0.91"



B4026621
Cover SL
PC (UL 94 V-0)
transparent
10.39"x7.09"x0.91"



B4026637
Cover SL, convex
ABS (UL 94 HB)
off-white RAL 9002
10.35"x7.09"x1.10"



B4030417
Lid L closed, flat
ABS (UL 94 HB)
off-white RAL 9002
10.55"x2.44"x0.94"

DATEC-TERMINAL



B4030617
Cover L, flat
ABS (UL 94 HB)
off-white RAL 9002
11.89"x8.66"x1.14"



B4030621
Cover L, flat
PC (UL 94 V-0)
transparent
11.89"x8.66"x1.14"



B4030631
Cover L, convex
PC (UL 94 V-0)
transparent
11.89"x8.66"x1.14"



B4030637
Cover L, convex
ABS (UL 94 HB)
off-white RAL 9002
11.89"x8.66"x1.14"



B4030657
Cover L, high
ABS (UL 94 HB)
off-white RAL 9002
11.89"x8.66"x1.97"



B4113106
Front panel S
Aluminum
matt anodized
4.96"x6.93"x0.08"



B4113126
Profile plate S
Aluminum
matt anodized
5.12"x7.09"x0.31"



B4113671
Cover strip S / SL
PC (UL 94 V-0)
transparent



B4113677
Cover strip S / SL
ABS (UL 94 HB)
off-white RAL 9002



B4116106
Front panel MS
Aluminum
matt anodized
6.51"x8.56"x0.08"



B4116116
Front panel MH
Aluminum
matt anodized
5.04"x8.23"x0.08"



B4116126
Profile plate M
Aluminum
matt anodized
6.61"x8.66"x0.31"



B4126106
Front panel SL
Aluminum
matt anodized
10.21"x6.93"x0.08"



B4126126
Profile plate SL
Aluminum
matt anodized
10.35"x7.09"x0.31"



B4130106
Front panel LS
Aluminum
matt anodized
11.79"x8.56"x0.08"



B4130116
Front panel LH
Aluminum
matt anodized
10.31"x8.23"x0.08"

DATEC-TERMINAL



B4130126
Profile plate L
Aluminum
matt anodized
11.89"x8.66"x0.31"

Accessory "wall/holder"



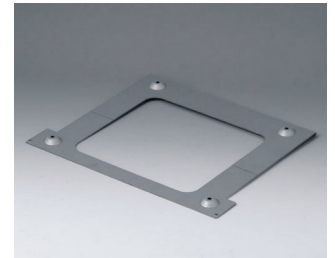
B4113147
Wall suspension element S
Steel
galvanized
3.11"x5.39"x0.31"



B4116147
Wall suspension element M
Steel
galvanized
8.43"x4.96"x0.47"



B4126147
Wall suspension element SL
Steel
galvanized
8.27"x5.39"x0.31"



B4130147
Wall suspension element L
Steel
galvanized
8.43"x10.24"x0.47"

Subject to technical modification without notice. © by OKW Gehäusesysteme, Buchen/Germany.