

EURO CASE

Large instrument enclosures

Our EURO CASE is smart, tough and very easy to assemble. The case shells, side and snap-in panels all have a strong clip together mechanism which does not require screws.

- plastic enclosures for desktop or portable electronic instruments
- plenty of space for operating elements and interfaces
- two standard widths: 42 TE & 63 TE
- four heights: 1 HE, 2 HE, 3 HE, 6 HE; side panels in three sizes (0.5 HE, 1 HE and 2 HE)
- additional side panels can be configured to allow for larger case heights i.e. for several assemblies to be stacked together in one unit
- injection-molded reinforcing ribs ensure that these conveniently light cases have a high degree of torsional resistance and rigidity
- ergonomic operation when using the tilt feet, or the robust carry handle bar which is also designed for portable use.
- problems in cooling can be addressed by the snap-in panels with integrated ventilation slots
- robust clip-together assembly
- minimum amount of assembly required thanks to the special OKW snap-lock mechanism
- aluminum front panels ordered separately, simply slide-in
- customize the EURO CASE to your own corporate design, e.g. by selecting the side panels and snap-in panels in your company's colors
- protection class < IP 40
- internal screw pillars for PCBs etc.
- four non-slip case feet included



EURO CASE

Applications and Examples

Measuring and control technology, peripheral devices, laboratory equipment, medical and wellness devices, etc.



Light therapy device

View Customizing Options

What do you still need for your own very personal product? We can supply enclosures and tuning knobs with all necessary modifications for fitting your electronic components.
Customizing options for Euro Case



Machining



Lacquering



Printing



Laser marking



Special material

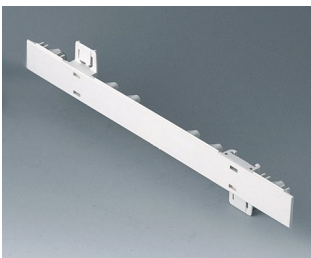


RFI/EMI shielding

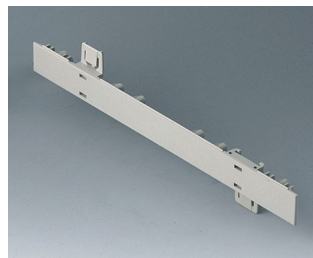


Installation / Assembly
of accessories

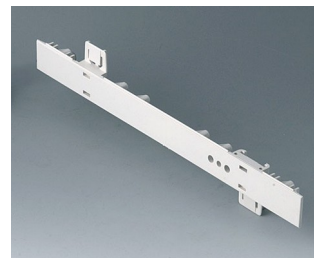
Select Versions



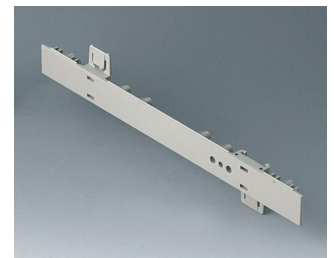
A0105270
Side panel 0.5 HE
ABS (UL 94 HB)
off-white RAL 9002
9.84"x0.88"



A0105280
Side panel 0.5 HE
ABS (UL 94 HB)
pebble gray RAL 7032
9.84"x0.88"

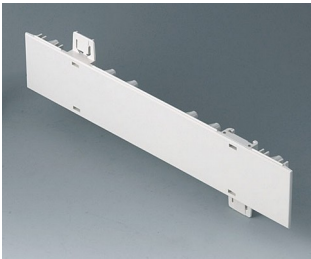


A0106270
Side panel 0.5 HE, for handle
mounting
ABS (UL 94 HB)
off-white RAL 9002
9.84"x0.88"



A0106280
Side panel 0.5 HE, for handle
mounting
ABS (UL 94 HB)
pebble gray RAL 7032
9.84"x0.88"

EURO CASE



A0110270
 Side panel 1 HE
 ABS (UL 94 HB)
 off-white RAL 9002
 9.84"x1.75"



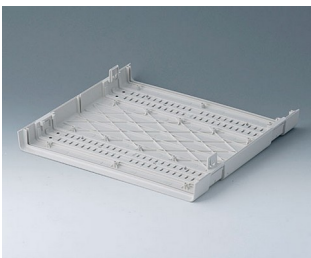
A0110280
 Side panel 1 HE
 ABS (UL 94 HB)
 pebble gray RAL 7032
 9.84"x1.75"



A0111270
 Side panel 1 HE, for handle
 mounting
 ABS (UL 94 HB)
 off-white RAL 9002
 9.84"x1.75"



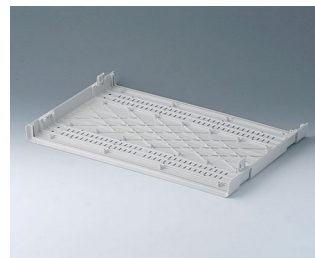
A0111280
 Side panel 1 HE, for handle
 mounting
 ABS (UL 94 HB)
 pebble gray RAL 7032
 9.84"x1.75"



A0114170
 Shell 42 TE
 ABS (UL 94 HB)
 off-white RAL 9002
 10.24"x9.84"x1.06"



A0114370
 Snap-in panel, without slots
 ABS (UL 94 HB)
 off-white RAL 9002



A0116170
 Shell 63 TE
 ABS (UL 94 HB)
 off-white RAL 9002
 14.45"x9.84"x1.06"



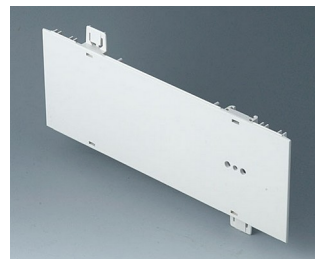
A0116370
 Snap-in panel, without slots
 ABS (UL 94 HB)
 off-white RAL 9002



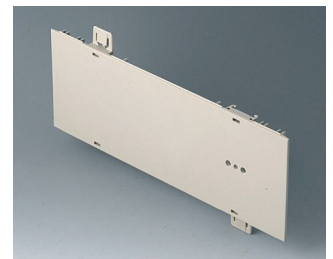
A0120270
 Side panel 2 HE
 ABS (UL 94 HB)
 off-white RAL 9002
 9.84"x3.50"



A0120280
 Side panel 2 HE
 ABS (UL 94 HB)
 pebble gray RAL 7032
 9.84"x3.50"



A0121270
 Side panel 2 HE, for handle
 mounting
 ABS (UL 94 HB)
 off-white RAL 9002
 9.84"x3.50"



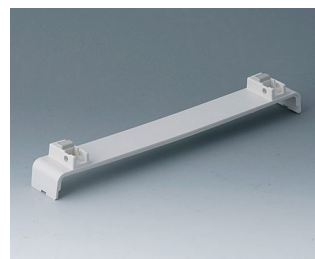
A0121280
 Side panel 2 HE, for handle
 mounting
 ABS (UL 94 HB)
 pebble gray RAL 7032
 9.84"x3.50"



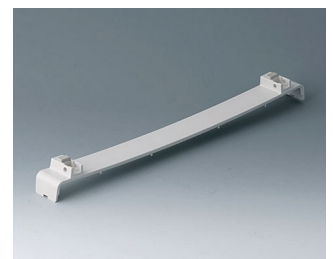
A0124370
 Snap-in panel, with slots
 ABS (UL 94 HB)
 off-white RAL 9002



A0126370
 Snap-in panel, with slots
 ABS (UL 94 HB)
 off-white RAL 9002

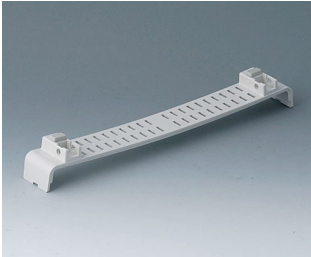


A0134370
 Snap-in panel, without slots, with
 feet
 ABS (UL 94 HB)
 off-white RAL 9002

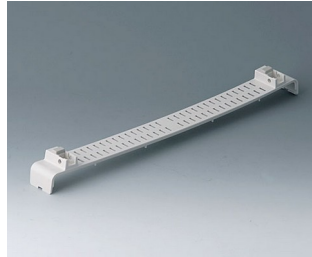


A0136370
 Snap-in panel, without slots, with
 feet
 ABS (UL 94 HB)
 off-white RAL 9002

EURO CASE



A0144370
Snap-in panel with, slots, with feet
ABS (UL 94 HB)
off-white RAL 9002



A0146370
Snap-in panel, with slots, with feet
ABS (UL 94 HB)
off-white RAL 9002



A0214070
EURO CASE 42 TE, without handle
ABS (UL 94 HB)
off-white RAL 9002
10.24"x9.84"x2.13"



A0214170
EURO CASE 42 TE, without handle
ABS (UL 94 HB)
off-white RAL 9002
10.24"x9.84"x2.13"



A0214270
EURO CASE 42 TE, without handle
ABS (UL 94 HB)
off-white RAL 9002
10.24"x9.84"x2.13"



A0216070
EURO CASE 63 TE, without handle
ABS (UL 94 HB)
off-white RAL 9002
14.45"x9.84"x2.13"



A0216170
EURO CASE 63 TE, without handle
ABS (UL 94 HB)
off-white RAL 9002
14.45"x9.84"x2.13"



A0216270
EURO CASE 63 TE, without handle
ABS (UL 94 HB)
off-white RAL 9002
14.45"x9.84"x2.13"



A0224070
EURO CASE 42 TE, without handle
ABS (UL 94 HB)
off-white RAL 9002
10.24"x9.84"x3.88"



A0224170
EURO CASE 42 TE, without handle
ABS (UL 94 HB)
off-white RAL 9002
10.24"x9.84"x3.88"



A0224270
EURO CASE 42 TE, without handle
ABS (UL 94 HB)
off-white RAL 9002
10.24"x9.84"x3.88"



A0224470
EURO CASE 42 TE, with handle
ABS (UL 94 HB)
off-white RAL 9002
10.24"x9.84"x3.88"



A0224570
EURO CASE 42 TE, with handle
ABS (UL 94 HB)
off-white RAL 9002
10.24"x9.84"x3.88"



A0224670
EURO CASE 42 TE, with handle
ABS (UL 94 HB)
off-white RAL 9002
10.24"x9.84"x3.88"



A0226070
EURO CASE 63 TE, without handle
ABS (UL 94 HB)
off-white RAL 9002
14.45"x9.84"x3.88"



A0226170
EURO CASE 63 TE, without handle
ABS (UL 94 HB)
off-white RAL 9002
14.45"x9.84"x3.88"

EURO CASE



A0226270
EURO CASE 63 TE, without handle
ABS (UL 94 HB)
off-white RAL 9002
14.45"x9.84"x3.88"



A0226470
EURO CASE 63 TE, with handle
ABS (UL 94 HB)
off-white RAL 9002
14.45"x9.84"x3.88"



A0226570
EURO CASE 63 TE, with handle
ABS (UL 94 HB)
off-white RAL 9002
14.45"x9.84"x3.88"



A0226670
EURO CASE 63 TE, with handle
ABS (UL 94 HB)
off-white RAL 9002
14.45"x9.84"x3.88"



A0234070
EURO CASE 42 TE, without handle
ABS (UL 94 HB)
off-white RAL 9002
10.24"x9.84"x5.63"



A0234170
EURO CASE 42 TE, without handle
ABS (UL 94 HB)
off-white RAL 9002
10.24"x9.84"x5.63"



A0234270
EURO CASE 42 TE, without handle
ABS (UL 94 HB)
off-white RAL 9002
10.24"x9.84"x5.63"



A0234470
EURO CASE 42 TE, with handle
ABS (UL 94 HB)
off-white RAL 9002
10.24"x9.84"x5.63"



A0234570
EURO CASE 42 TE, with handle
ABS (UL 94 HB)
off-white RAL 9002
10.24"x9.84"x5.63"



A0234670
EURO CASE 42 TE, with handle
ABS (UL 94 HB)
off-white RAL 9002
10.24"x9.84"x5.63"



A0236070
EURO CASE 63 TE, without handle
ABS (UL 94 HB)
off-white RAL 9002
14.45"x9.84"x5.63"



A0236170
EURO CASE 63 TE, without handle
ABS (UL 94 HB)
off-white RAL 9002
14.45"x9.84"x5.63"



A0236270
EURO CASE 63 TE, without handle
ABS (UL 94 HB)
off-white RAL 9002
14.45"x9.84"x5.63"



A0236470
EURO CASE 63 TE, with handle
ABS (UL 94 HB)
off-white RAL 9002
14.45"x9.84"x5.63"



A0236570
EURO CASE 63 TE, with handle
ABS (UL 94 HB)
off-white RAL 9002
14.45"x9.84"x5.63"



A0236670
EURO CASE 63 TE, with handle
ABS (UL 94 HB)
off-white RAL 9002
14.45"x9.84"x5.63"

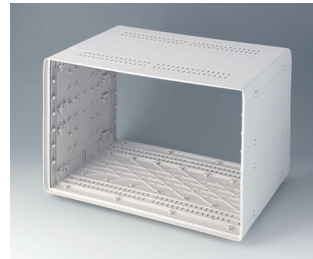
EURO CASE



A0266070
EURO CASE 63 TE, without handle
ABS (UL 94 HB)
off-white RAL 9002
14.45"x9.84"x10.89"



A0266170
EURO CASE 63 TE, without handle
ABS (UL 94 HB)
off-white RAL 9002
14.45"x9.84"x10.89"



A0266270
EURO CASE 63 TE, without handle
ABS (UL 94 HB)
off-white RAL 9002
14.45"x9.84"x10.89"



A0344216
Handle 42 TE
PA 6
off-white RAL 9002



A0344217
Handle 42 TE
PA 6
off-white RAL 9002



A0344218
Handle 42 TE
PA 6
pebble gray RAL 7032



A0346316
Handle 63 TE
PA 6
off-white RAL 9002

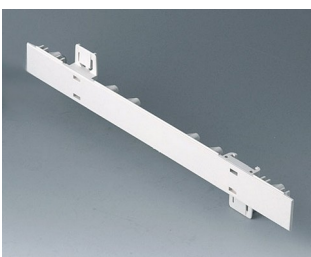


A0346317
Handle 63 TE
PA 6
off-white RAL 9002

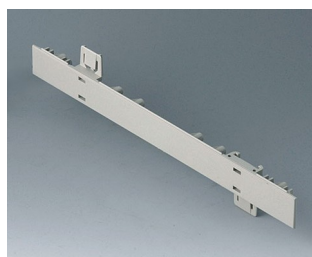


A0346318
Handle 63 TE
PA 6
pebble gray RAL 7032

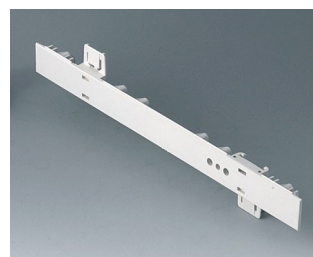
System components to complete



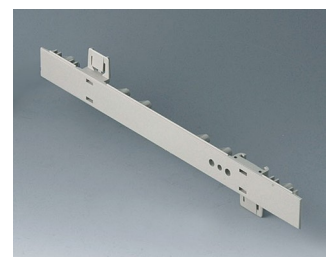
A0105270
Side panel 0.5 HE
ABS (UL 94 HB)
off-white RAL 9002
9.84"x0.88"



A0105280
Side panel 0.5 HE
ABS (UL 94 HB)
pebble gray RAL 7032
9.84"x0.88"

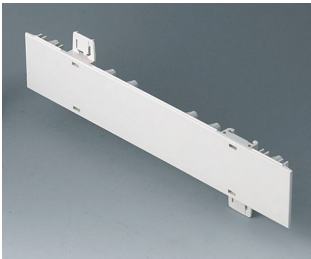


A0106270
Side panel 0.5 HE, for handle mounting
ABS (UL 94 HB)
off-white RAL 9002
9.84"x0.88"

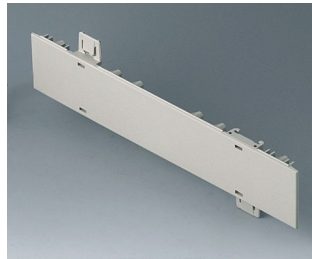


A0106280
Side panel 0.5 HE, for handle mounting
ABS (UL 94 HB)
pebble gray RAL 7032
9.84"x0.88"

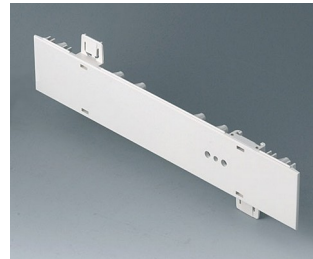
EURO CASE



A0110270
Side panel 1 HE
ABS (UL 94 HB)
off-white RAL 9002
9.84"x1.75"



A0110280
Side panel 1 HE
ABS (UL 94 HB)
pebble gray RAL 7032
9.84"x1.75"



A0111270
Side panel 1 HE, for handle
mounting
ABS (UL 94 HB)
off-white RAL 9002
9.84"x1.75"



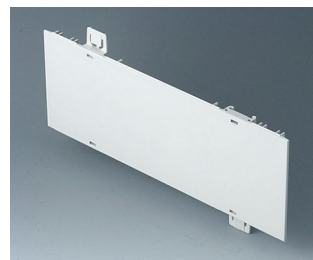
A0111280
Side panel 1 HE, for handle
mounting
ABS (UL 94 HB)
pebble gray RAL 7032
9.84"x1.75"



A0114370
Snap-in panel, without slots
ABS (UL 94 HB)
off-white RAL 9002



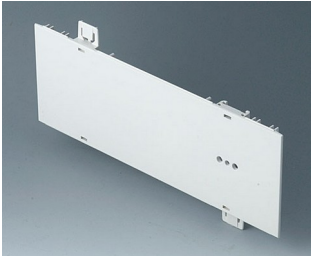
A0116370
Snap-in panel, without slots
ABS (UL 94 HB)
off-white RAL 9002



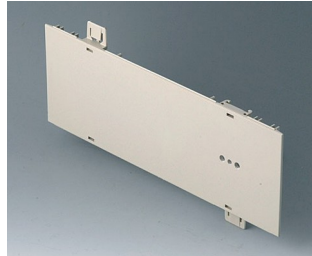
A0120270
Side panel 2 HE
ABS (UL 94 HB)
off-white RAL 9002
9.84"x3.50"



A0120280
Side panel 2 HE
ABS (UL 94 HB)
pebble gray RAL 7032
9.84"x3.50"



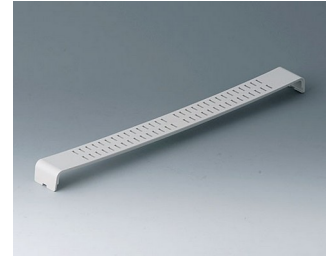
A0121270
Side panel 2 HE, for handle
mounting
ABS (UL 94 HB)
off-white RAL 9002
9.84"x3.50"



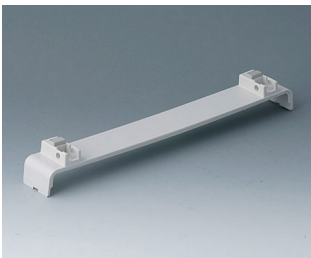
A0121280
Side panel 2 HE, for handle
mounting
ABS (UL 94 HB)
pebble gray RAL 7032
9.84"x3.50"



A0124370
Snap-in panel, with slots
ABS (UL 94 HB)
off-white RAL 9002



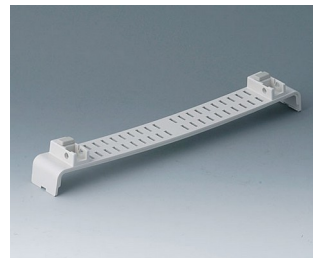
A0126370
Snap-in panel, with slots
ABS (UL 94 HB)
off-white RAL 9002



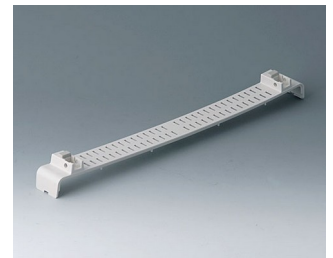
A0134370
Snap-in panel, without slots, with
feet
ABS (UL 94 HB)
off-white RAL 9002



A0136370
Snap-in panel, without slots, with
feet
ABS (UL 94 HB)
off-white RAL 9002



A0144370
Snap-in panel with, slots, with
feet
ABS (UL 94 HB)
off-white RAL 9002



A0146370
Snap-in panel, with slots, with
feet
ABS (UL 94 HB)
off-white RAL 9002

EURO CASE



A0344216
Handle 42 TE
PA 6
off-white RAL 9002



A0344217
Handle 42 TE
PA 6
off-white RAL 9002



A0344218
Handle 42 TE
PA 6
pebble gray RAL 7032



A0346316
Handle 63 TE
PA 6
off-white RAL 9002



A0346317
Handle 63 TE
PA 6
off-white RAL 9002



A0346318
Handle 63 TE
PA 6
pebble gray RAL 7032

Accessory to complete



A0314270
Front / rear panel 42 TE 1 HE
Aluminum
matt anodized
9.87"x1.82"x0.08"



A0316370
Front / rear panel 63 TE 1 HE
Aluminum
matt anodized
14.09"x1.82"x0.08"



A0324270
Front / rear panel 42 TE 2 HE
Aluminum
matt anodized
9.87"x3.57"x0.08"



A0326370
Front / rear panel 63 TE 2 HE
Aluminum
matt anodized
14.09"x3.57"x0.08"



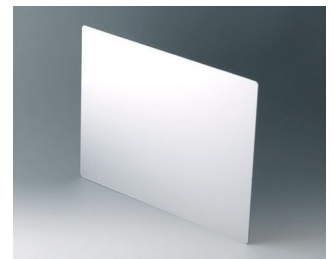
A0334270
Front / rear panel 42 TE 3 HE
Aluminum
matt anodized
9.87"x5.32"x0.08"



A0336370
Front / rear panel 63 TE 3 HE
Aluminum
matt anodized
14.09"x5.32"x0.08"



A0354270
Front / rear panel 42 TE 1.5 HE
Aluminum
matt anodized
9.87"x2.70"x0.08"



A0366370
Front / rear panel 63 TE 6 HE
Aluminum
matt anodized
10.57"x14.09"x0.08"

EURO CASE

Accessory "screws"



A0306031
Self-tapping screws 0.118" x
0.236" (PZ1)



A0308031
Self-tapping screws 0.118" x
0.315" (PZ1)



A0308132
Self-tapping screw 0.118" x
0.315" (T10)
Stainless steel

Accessory



A0350007
Tilt foot
ABS (UL 94 HB)
off-white RAL 9002

Subject to technical modification without notice. © by OKW Gehäusesysteme, Buchen/Germany.