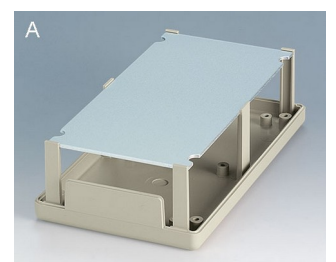
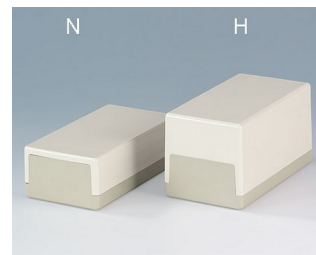
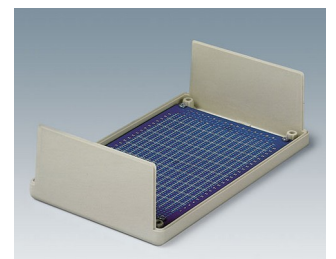
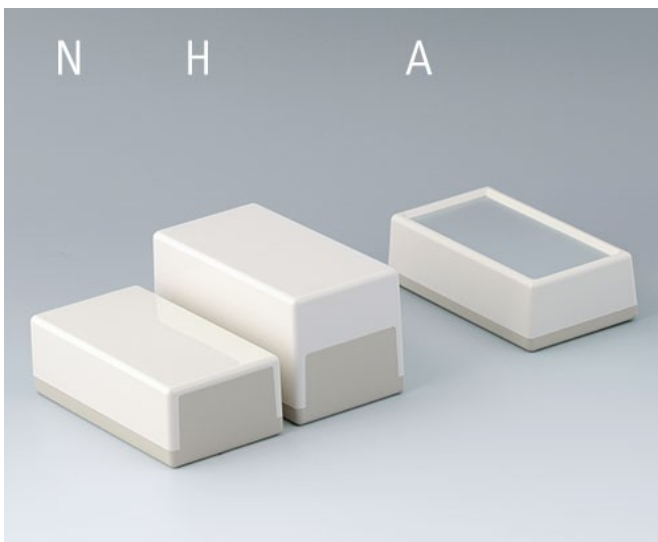


FLAT-PACK CASE

Multi-purpose plastic enclosures

Our FLAT-PACK CASES offer simple and low-priced enclosures for your electronics.

- large range of sizes and versions for table-top and wall mounting
- robust construction with tongue & groove design
- the bottom parts are open at the sides and are thus particularly useful for all installation and service work
- with low (N) and high (H) top part
- versions with handle bar for ergonomic operation or easy carrying
- with ventilation slots for components dissipating high heat (189 L)
- with slots on the top for miniature appliances with sound signal (120 S)
- type A models with aluminum front panels; operating elements are protected by a raised edge on the case
- protection class IP 40 (version without slots)
- internal screw pillars for PCBs etc.



FLAT-PACK CASE

Applications and Examples

Universal enclosures for electronic and electrotechnical devices, e.g. measuring and control instruments, medical, wellness and laboratory equipment, computer peripherals, etc.



Suppressed electronic power controller

View Customizing Options

What do you still need for your own very personal product? We can supply enclosures and tuning knobs with all necessary modifications for fitting your electronic components.
Customizing options for Flat-Pack Case



Machining



Lacquering



Printing



Laser marking



Special material



Installation / Assembly
of accessories

FLAT-PACK CASE

Select Versions



A9010065
 FLAT-PACK CASES 100 N,
 Vers. I
 ABS (UL 94 HB)
 off-white RAL 9002
 3.94"x1.97"x0.98"
 IP 40



A9011065
 FLAT-PACK CASES 100 H,
 Vers. I
 ABS (UL 94 HB)
 off-white RAL 9002
 3.94"x1.97"x1.57"
 IP 40



A9020065
 FLAT-PACK CASES 120 N,
 Vers. I
 ABS (UL 94 HB)
 off-white RAL 9002
 4.72"x2.56"x1.57"
 IP 40



A9020265
 FLAT-PACK CASE 120 S
 ABS (UL 94 HB)
 off-white RAL 9002
 4.72"x2.56"x1.57"



A9021065
 FLAT-PACK CASE 120 H, Vers. I
 ABS (UL 94 HB)
 off-white RAL 9002
 4.72"x2.56"x2.56"
 IP 40



A9030065
 FLAT-PACK CASES 150 N,
 Vers. I
 ABS (UL 94 HB)
 off-white RAL 9002
 5.91"x3.15"x1.97"
 IP 40



A9030165
 FLAT-PACK CASES 150 N,
 Vers. II
 ABS (UL 94 HB)
 off-white RAL 9002
 5.91"x3.15"x1.97"
 IP 40



A9031065
 FLAT-PACK CASE 150 H, Vers. I
 ABS (UL 94 HB)
 off-white RAL 9002
 5.91"x3.15"x3.15"
 IP 40



A9032065
 FLAT-PACK CASES 150 N,
 Vers. I
 ABS (UL 94 HB)
 off-white RAL 9002
 5.91"x3.15"x2.17"
 IP 40



A9040065
 FLAT-PACK CASES 189 N,
 Vers. I
 ABS (UL 94 HB)
 off-white RAL 9002
 7.44"x4.33"x2.36"
 IP 40



A9040165
 FLAT-PACK CASES 189 N,
 Vers. II
 ABS (UL 94 HB)
 off-white RAL 9002
 7.44"x4.33"x2.36"
 IP 40



A9041065
 FLAT-PACK CASE 189 H, Vers. I
 ABS (UL 94 HB)
 off-white RAL 9002
 7.44"x4.33"x3.82"
 IP 40

FLAT-PACK CASE



A9041165
 FLAT-PACK CASE 189 H, Vers. II
 ABS (UL 94 HB)
 off-white RAL 9002
 7.44"x4.33"x3.82"
 IP 40



A9042065
 FLAT-PACK CASE 189 H, Vers. I
 ABS (UL 94 HB)
 off-white RAL 9002
 7.44"x4.33"x4.72"
 IP 40



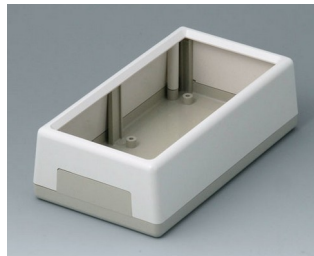
A9043065
 FLAT-PACK CASES 189 N,
 Vers. I
 ABS (UL 94 HB)
 off-white RAL 9002
 7.44"x4.33"x2.76"
 IP 40



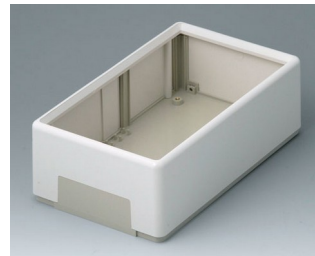
A9043265
 FLAT-PACK CASE 189 L
 ABS (UL 94 HB)
 off-white RAL 9002
 7.44"x4.33"x2.76"



A9520165
 FLAT-PACK CASE 120 A
 ABS (UL 94 HB)
 off-white RAL 9002
 4.72"x2.56"x1.57"
 IP 40



A9530165
 FLAT-PACK CASE 150 A
 ABS (UL 94 HB)
 off-white RAL 9002
 5.91"x3.35"x1.77"
 IP 40

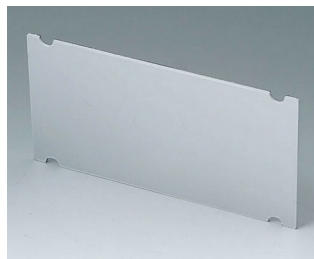


A9540165
 FLAT-PACK CASE 210 A
 ABS (UL 94 HB)
 off-white RAL 9002
 8.27"x4.92"x2.76"
 IP 40

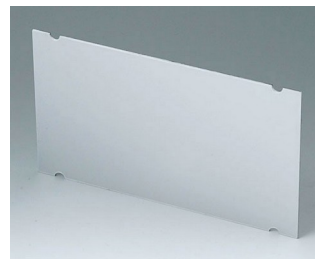
Accessory to complete



A9195201
 Front panel 120 A
 Aluminum
 matt anodized
 4.45"x2.28"x0.04"



A9195301
 Front panel 150 A
 Aluminum
 matt anodized
 5.58"x2.82"x0.06"



A9195401
 Front panel 210 A
 Aluminum
 matt anodized
 7.91"x4.57"x0.06"

FLAT-PACK CASE

Accessory "wall/holder"



A9100008
Snap-lock
PA 6 (UL 94 HB)
natural-colored



A9120000
Assembly kit for wall mounting



A9130000
Assembly kit for wall mounting



A9132000
Assembly kit for wall mounting



A9140000
Assembly kit for wall mounting



B1350048
Wall suspension elements
ABS (UL 94 HB)
pebble gray RAL 7032



B1360048
Wall suspension elements
ABS (UL 94 HB)
pebble gray RAL 7032

Accessory "carrying"



A9172107
Belt/Pocket clip
ABS (UL 94 HB)
off-white RAL 9002
2.44"x1.18"

Accessory "screws"



A0306031
Self-tapping screws 0.118" x
0.236" (PZ1)



A0308031
Self-tapping screws 0.118" x
0.315" (PZ1)



A0308132
Self-tapping screw 0.118" x
0.315" (T10)
Stainless steel

FLAT-PACK CASE

Accessory



A9100008
Snap-lock
PA 6 (UL 94 HB)
natural-colored



A9207150
Anti-slide feet 0.256" x 0.079"
transparent



A9210290
Anti-slide feet 0.374" x 0.150"
transparent



A9250807
Tilt foot bar
ABS (UL 94 HB)
off-white RAL 9002



A9250817
Tilt foot bar
ABS (UL 94 HB)
off-white RAL 9002

Subject to technical modification without notice. © by OKW Gehäusesysteme, Buchen/Germany.