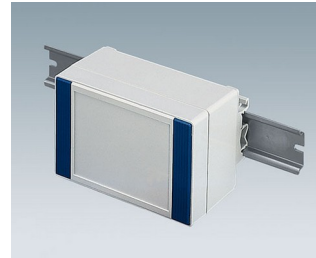
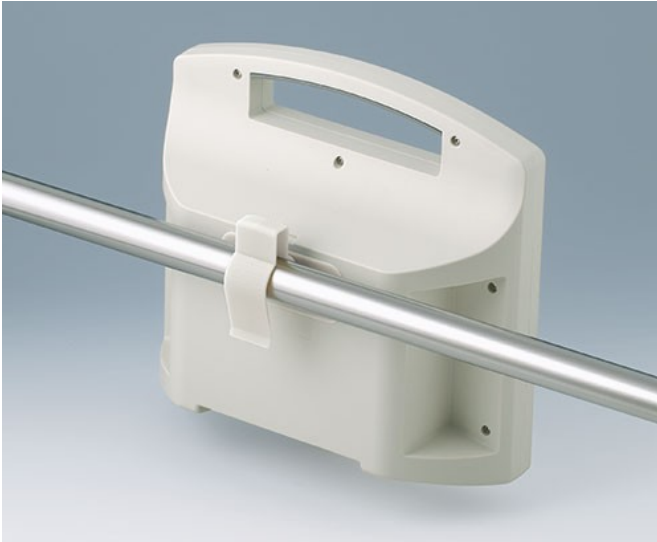


# HOLDING DEVICES

- Fastening element for DIN rails in accordance with DIN EN 60715 TH35 and G32
- Holding clamp for round tubes up to  $\varnothing$  1.260" / equipment rails DIN EN ISO 19054
- Pole/mast mounting bracket for versatile applications



## View Customizing Options

What do you still need for your own very personal product? We can supply enclosures and tuning knobs with all necessary modifications for fitting your electronic components.  
Customizing options for Holding devices



Machining



Printing



Laser marking



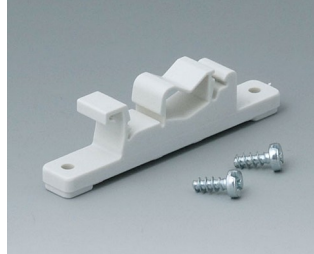
Installation / Assembly  
of accessories

# HOLDING DEVICES

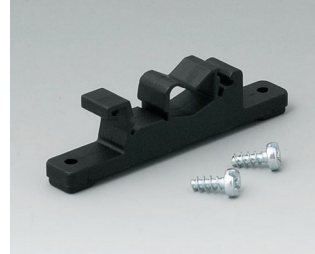
## Select Versions



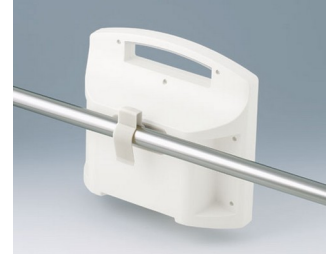
**A9325018**  
Pole/mast mounting bracket  
ASA (UL 94 HB)  
anthracite gray RAL 7016  
3.94"x3.94"x0.79"



**B1300017**  
Fastening element for DIN-Rails  
PA 6  
off-white RAL 9002



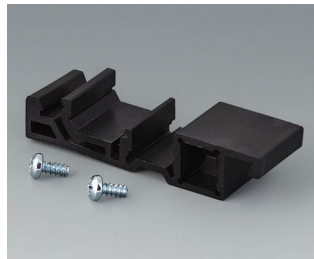
**B1300019**  
Fastening element for DIN-Rails  
PA 6  
black RAL 9005



**B4308237**  
Holding clamps  
PA 6  
off-white RAL 9002



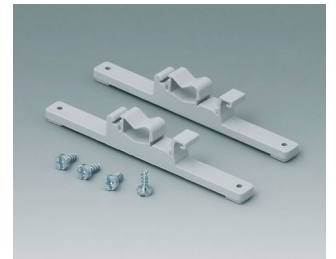
**B4308238**  
Holding clamps  
PA 6  
lava



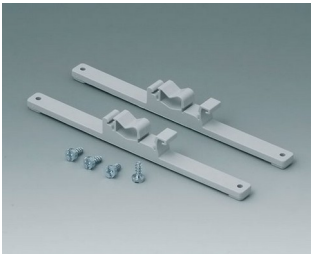
**B6811751**  
DIN rail adapter  
PA 66 (UL 94 V-0)  
black RAL 9005



**C2201088**  
Fastening elements to DIN-Rails  
PA 6  
light gray RAL 7035



**C2203128**  
Fastening elements to DIN-Rails  
PA 6  
light gray RAL 7035



**C2204168**  
Fastening elements to DIN-Rails  
PA 6  
light gray RAL 7035

Subject to technical modification without notice. © by OKW Gehäusesysteme, Buchen/Germany.